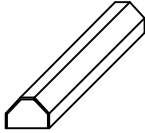
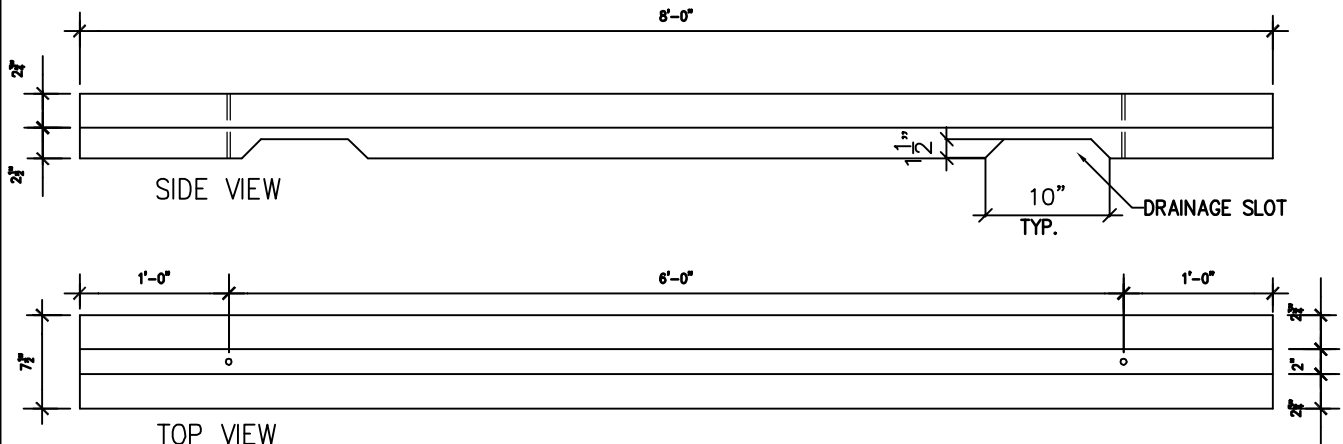


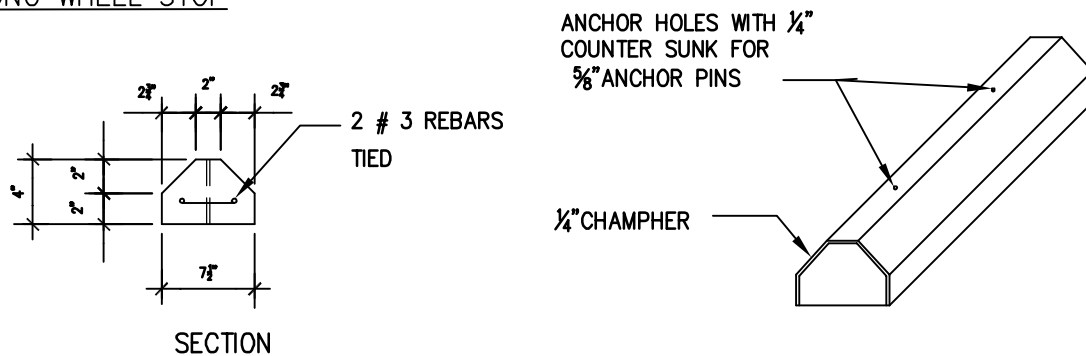
CB08



APC AMERICAN PRECAST CONCRETE, INC.



8'-0" LONG WHEEL STOP



NOTE:

PORTLAND CEMENT CONCRETE SHALL BE A, SIX SACK MIX. DEVELOPING NOTHING LESS THAN 5000 PSI COMPRESSIVE STRENGTH AT 28 DAYS.

WITH OR WITHOUT WEEP HOLES

FACTORY: 2246 N. DURFEE AVE. EL MONTE, CA. 91732

TEL. (626) 443-0970 FAX (818) 827-4941

WEB: WWW. APC WHEELSTOPS.COM